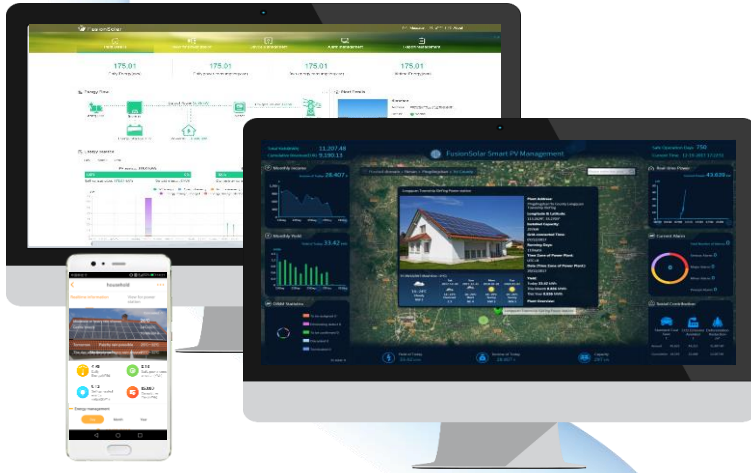


# FusionSolar Smart PV Management System



## Simple & Swift

- Simple commissioning of all local components by Local APP
- One-click commissioning by import saved configuration

## Convenient & Reliable

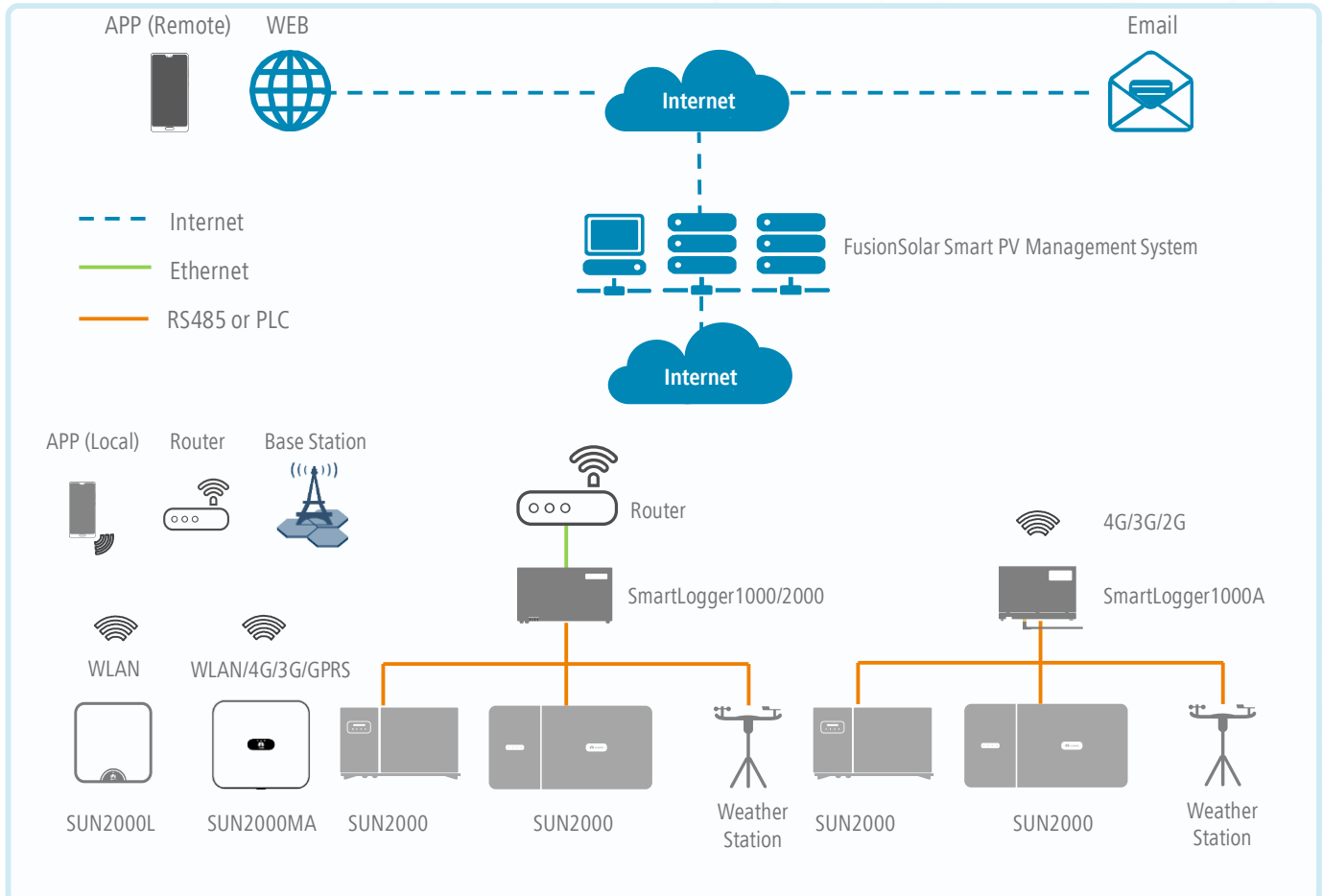
- Clear illustration on your home energy flow, indicating your home energy generation and self-consumption
- Real-time data on PV module\*, inverter and plant
- Access your historical data at anytime from anywhere
- Data back-up for all plant performance data

## Improved O&M Experience

- Support module-level physical layout display
- Module-level fault detection & performance management
- Proactive O&M via smart I-V curve diagnosis and dispersion rate analysis
- Remote O&M to issue the ticket and finish fault recovery

\*Full optimizer solution with Smart PV Safety Box required

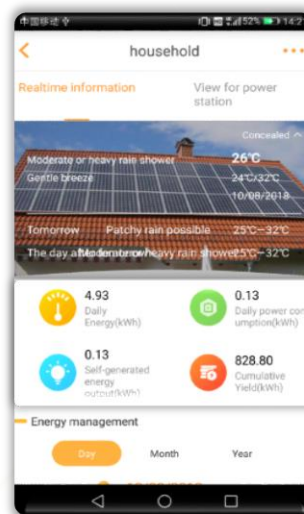
## Network Structure



The text and figures reflect the current technical state at the time of printing. Subject to technical changes. Errors and omissions excepted. Huawei assumes no liability for mistakes or printing errors. For more information, please visit solar.huawei.com. Version No.:01-(201807)



# FusionSolar Smart PV Management System



## WEB

## APP

- Overall management on all plants, including yields, power output, alarms and O&M statistics
- Real-time plant-, inverter- and panel-level data collection, access your plant at anytime from anywhere
- Online diagnosis to find out low performance device
- Remote O&M, one-click ticket issuing, simple and efficient for fault recovery

- Swift commissioning for all local components
- Installer & end-user account available
- Real-time status on each plant and module\*
- Mobile O&M for fault recovery

\*Full optimizer solution with Smart PV Safety Box required

|                  | Feature List                      | WEB | APP |
|------------------|-----------------------------------|-----|-----|
| Basic Feature    | Swift Installation & Registration | ●   | ●   |
|                  | Data Collection                   | ●   | ●   |
|                  | Dashboard                         | ●   | ●   |
|                  | Energy Flow                       | ●   | ●   |
|                  | Energy Generation & Consumption   | ●   | ●   |
|                  | Device Management                 | ●   | ●   |
|                  | Report Management                 | ●   | ●   |
|                  | Alarm Management                  | ●   | ●   |
| Advanced Feature | System Configuration              | ●   | ●   |
|                  | Intelligent O&M                   | ○   | ○   |
|                  | Mobile O&M                        | ○   | ○   |
|                  | Proactive Diagnosis               | ○   | ○   |
|                  | Smart I-V Curve Diagnosis         | ○   | ○   |

● Basic ○ Optional